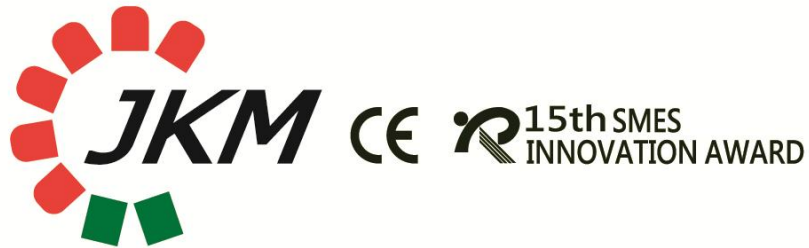




JIAN KWANG MACHINERY  
見光機械工業股份有限公司



見光  
機械



Pelletizing 節能造粒

Recycling 環保回收

Compounding 均質複合

+886-4-23580888

+886-4-23506988

<http://www.jkm3r.com>

[jumbomac@ms42.hinet.net](mailto:jumbomac@ms42.hinet.net)

add. NO.62, 34TH RD., TAICHUNG INDUSTRIAL PARK, TAICHUNG 40768, TAIWAN





Founded in 1979 in Taichung, the middle of Taiwan, Jian Kwang Machine Industrial CO., LTD. has been specialized in making extruders, high speed mixers, dispersion kneaders, two step plastic recycling machines, etc... Jian Kwang has earned a good reputation at home and abroad.

With good production capabilities, Jian Kwang offers three major kinds of machines, including crusher combing with kneader & extruders(The whole-plant equipment), two-color plastic stationary-use plate turnkey plants and water-ring-cutting kneader extruding plants, which have been well received by our clients in the USA., South America, Europe, Middle East, South Asia and Africa. One of the most successful shoe manufacturers in the USA., Crocs Inc., is also on the company's client list.

Jian Kwang is praised for its strong R&D capabilities, placing heavy emphasis on the design of its machines to secure the best performance. The company provides on-time deliveries, after-sales technical support and technical consultation for solving customers' problems at clients' locations.

Jian Kwang with a skillful workforce is proud to offer solid quality of its machines and timely services to clients.

## Pelletization 造粒整廠設備

強力加壓利拿式捏合造粒成型整廠設備 EVA/TPR Kneader Extruding Plant.....	1
強力加壓利拿式捏合水中造粒成型整廠設備 Under-Water-Cutting Kneader Extruding Plant.....	3
密封式高速混和機 Banbury (Intensive Mixer).....	5
密煉式捏合機 Dispersion Kneader.....	7
滾輪機 Mixing Roller.....	9
實驗室設備 Laboratory Equipment.....	11
攪拌烘乾機 Mixing Drying Machine.....	12
混合染色機 & 高速混合染色機 Mixer & High Speed Mixer.....	13
遞減式自動計量混合攪拌機 Gradual Reduction Automatic Metering Mixer.....	14

## Recycling 回收造粒整廠設備

EVA廢料回收整廠設備 EVA Waste Recycling Process Equipment.....	15
子母式廢料回收整廠設備 Two Step Plastic Recycling Machine Equipment.....	17
水洗式強力粉碎機 & 清洗設備 Water Type Powerful Crusher & Washing System.....	19
強力粉碎機 Powerful Crusher.....	21
強力破碎機 Powerful Shredder.....	23
重切削用磨刀機 Automatic Knife Grinder.....	24
連續式烘乾機 Continuous Drying System.....	24



# 強力加壓利拿式捏合造粒成型整廠設備 EVA/TPR Kneader Extruding Plant

**AVAILABLE MATERIAL: EVA, RUBBER, TPR.**

**FEATURES:**

- The kneader can mix many kinds of raw material with chemistry formulation and produce different kinds of plastic pellets.
- The pellet size is uniform.
- The output of manufacturing plastic pellets has a great ability to save production time & manpower.
- It can achieve a high output and save energy.

**SPECIFICATION**

TYPE	JKM - 65KE MATCH 5L	JKM - 85KE MATCH 35L	JKM - 120KE MATCH 55L	JKM - 165KE MATCH 75L	JKM - 180KE MATCH 110L
MAIN SCREW DIAMETER	Ø 65 mm	Ø 85 mm	Ø 120 mm	Ø 165 mm	Ø 180 mm
SCREW LENGTH L/D	10/1	10/1	10/1	10/1	10/1
DRIVE MOTOR	10 HP - AC INVERTER	30 HP - AC INVERTER	60 HP - AC INVERTER	100 HP - AC INVERTER	125 HP - AC INVERTER
PRODUCTIVITY (kg/hr.)	15	140~200	200~300	300~450	450~600
KNEADER FORCE FEED POWER	2 HP	5 HP	7.5 HP	10 HP	10 HP
ROTATE SPEED	35 R.P.M				
AUTO THERMO CONTROLLER	3 ZONES		4 ZONES		5 ZONES
BARREL COOLING DEVICE	WATER COOLING				
GRANULAR DIAMETER	3 ~ 5 mm				
PELLETIZING MOTOR	1 HP	2 HP		3 HP	
COOLING DEVICE	AIR COOLING OR WATER COOLING				
GEAR BOX	OIL BATH LUBRICATION				
SPEED VARIATION	VARIABLE				
BLOWER MOTOR	1 HP x 3"	3 HP x 4"	5 HP x 4"	5 HP x 5"	5 HP x 5"
COOLING BARREL	2~4 SETS				
STORAGE BARREL CAPACITY(kgs)	200	400 or 200	600	1000	2000
MACHINE DIMENSION (LxWxH)mm	2480 x 810 x 1300	3210 x 1620 x 1610	3610 x 1850 x 1930	4290 x 2130 x 2040	4500 x 2130 x 2140
MACHINE NET WEIGHT(kgs)	1500	2000	3000	4000	4500
SCREW MATERIAL	SNCM-439	SNCM-439	SNCM-439	SNCM-439	SNCM-439
BARREL MATERIAL	SACM-645	SACM-645	SACM-645	SACM-645	SACM-645
WHOLE PLANT DIMENSION (LxWxH)mm	(L) 8150 (W) 1670 (H) 2400	(L) 16500 (W) 2700 (H) 3230	(L) 20500 (W) 1670 (H) 2400	(L) 21650 (W) 3480 (H) 3340	(L) 22640 (W) 3650 (H) 3450



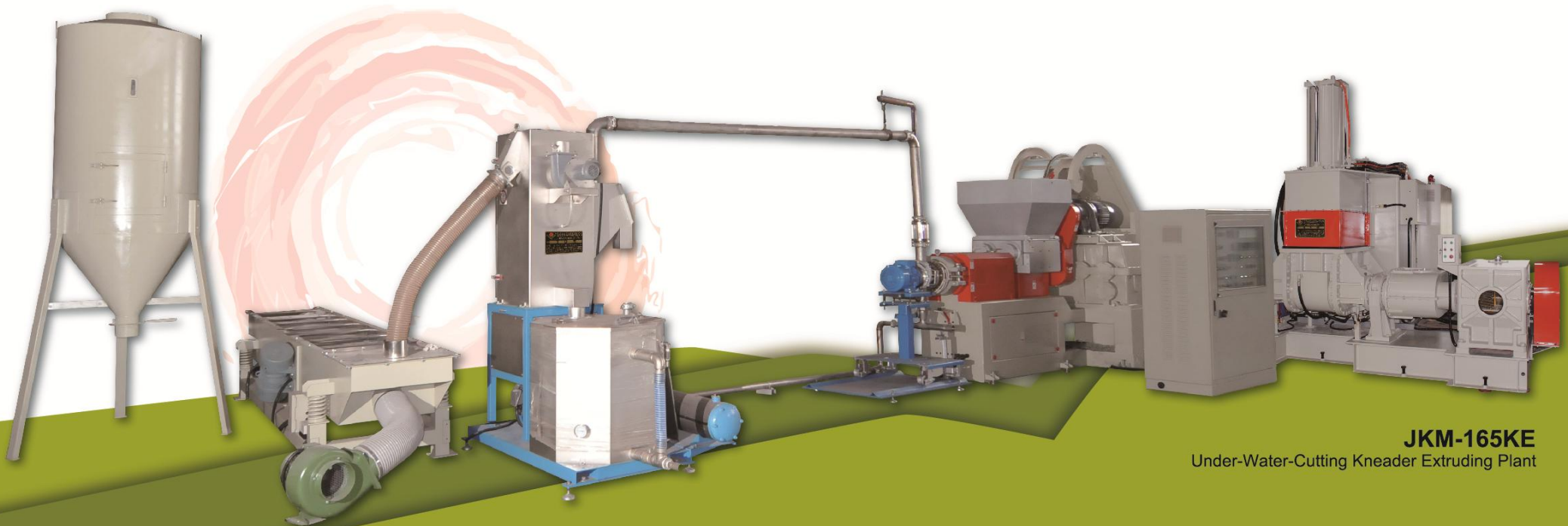
**JKM-165KE**  
EVA/TPR Kneader Extruding Plant

# 強力加壓利拿式捏合水中造粒成型整廠設備 Under-Water-Cutting Kneader Extruding Plant

## FEATURES:

- The kneader can mix many kinds of raw materials with chemistry formulation and produce different kinds of plastics pellets.
- The pellet size is uniform.
- The output of manufacturing plastic pellets per hour has its great ability to save production time & manpower.
- It can achieve high output and save energy.
- This type of under-water-cutting is ideal for sticky material.
- The SOLAR EVA FILM can be recycled from this type of machine.

## SOLAR FILM RECYCLE



**JKM-165KE**

Under-Water-Cutting Kneader Extruding Plant



# Banbury (Intensive Mixer)

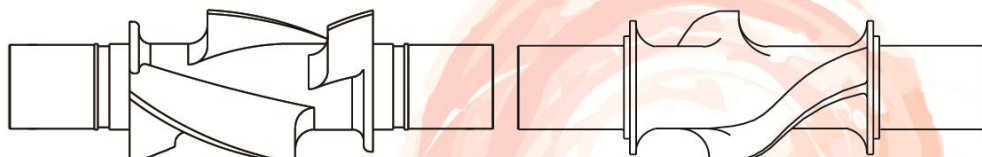
## 密封式高速混和機

Available Material: EVA, RUBBER, TPR...etc.

### FEATURES:

- This Intensive Mixer is designed for mixing compounds and specific plastic. The structure of the machine consists of main air cylinder, floating weight, feeding door, mixing chamber, rotors and discharge device.
- When performing mixing compound operations, the material and ingredients are fed together into the mixing chamber. The material in the mixing chamber is repeatedly sheared and squeezed by the rotors.
- This provides a series of chemical rotations between the material and the ingredients, which enables the material pieces to stick together into a paste mass shape. Mixing compound operations are performed according to the set temperature and conditions.
- This specially designed mixing machine provides efficient mixing and refining for a wide range of raw materials, such as raw rubber, resins, asphalt, cellulose, PVC and EVA...etc.

Laboratory Intensive Mixer Option Is Also Available.



BANBURY ROTOR (Design for Rubber)

BANBURY ROTOR (Design for Plastic)

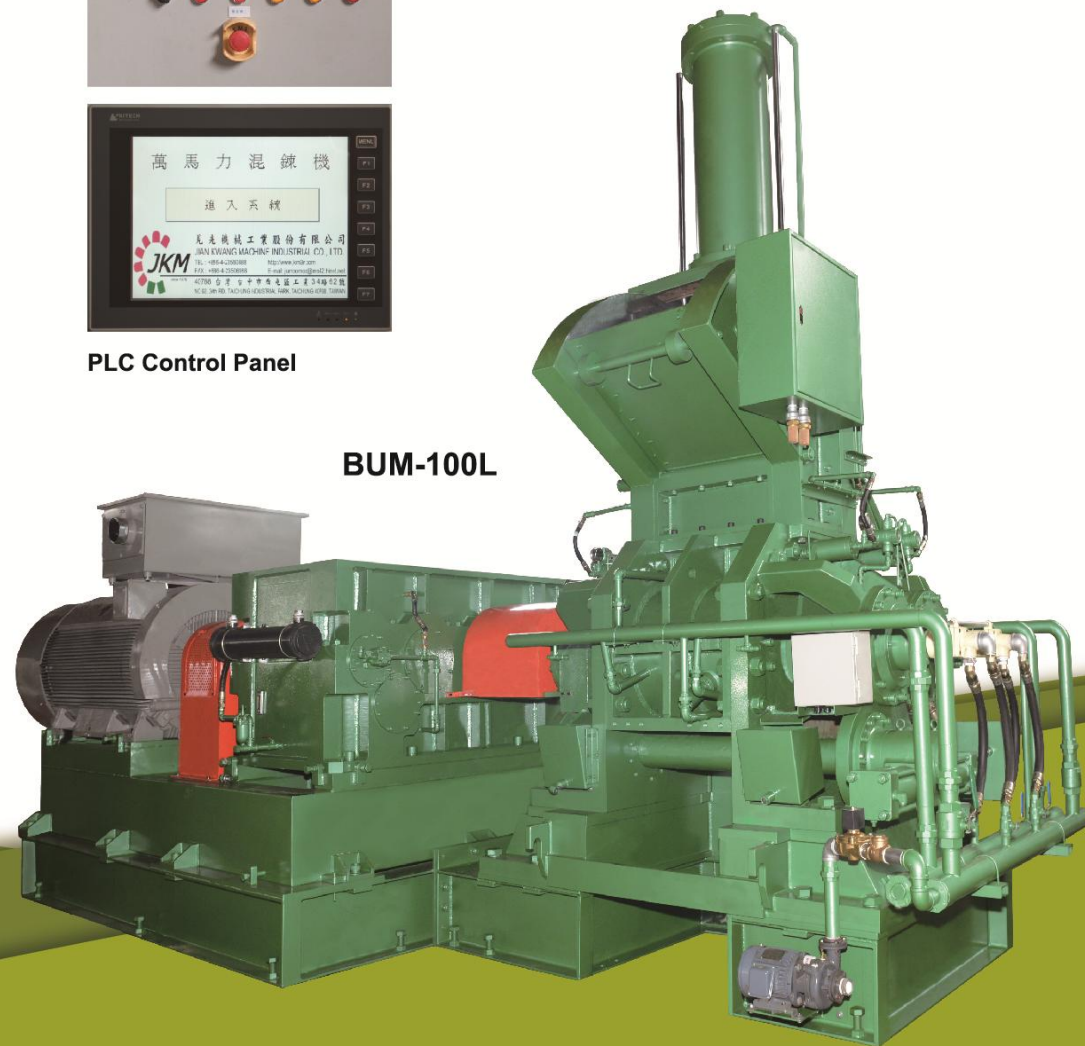
### SPECIFICATION

TYPE		Mixing Capacity 混合容積	MAIN POWER (HP)	攪料室 內孔	ROTOR DIAMETER (mm)	ENTRANCE (L x W) mm	RPM	差速比	MACHINE DIMENSION (L x W x H) mm
BUM-75L	PLASTIC	75L	200HP*8P	Ø385 x 610L	Ø380 x 580L	286 * 610	48.0 / 43.0 rpm	1.11/1	6160 x 2330 x 3715
	RUBBER		400HP*8P				36.0 / 32.2 rpm	1.116/1	
BUM-100L	PLASTIC	100L	300HP*8P	Ø408 x 660L	Ø402 x 658L	290 * 658	47.6 / 42.7 rpm	1.11/1	6290 x 2400 x 4260
	RUBBER		500HP*8P				36.0 / 32.2 rpm	1.116/1	
BUM-120L	PLASTIC	120L	450HP*8P	Ø460 x 700L	Ø454 x 700L	354 * 700	40.5 / 36.4 rpm	1.11/1	7025 x 2830 x 4665
	RUBBER		650HP*8P				36.0 / 32.2 rpm	1.116/1	
BUM-160L	PLASTIC	160L	600HP*8P	Ø518 x 800L	Ø508 x 800L	388 * 800	36.0 / 32.4 rpm	1.11/1	7985 x 3015 x 4985
	RUBBER		850HP*8P				36.0 / 32.2 rpm	1.116/1	
BUM-240L	PLASTIC	240L	1600HP DC	Ø580 x 813L	Ø560 x 810L	400 * 813	40 ~ 60 rpm	1.11/1	8945 x 3200 x 5300
	RUBBER								



PLC Control Panel

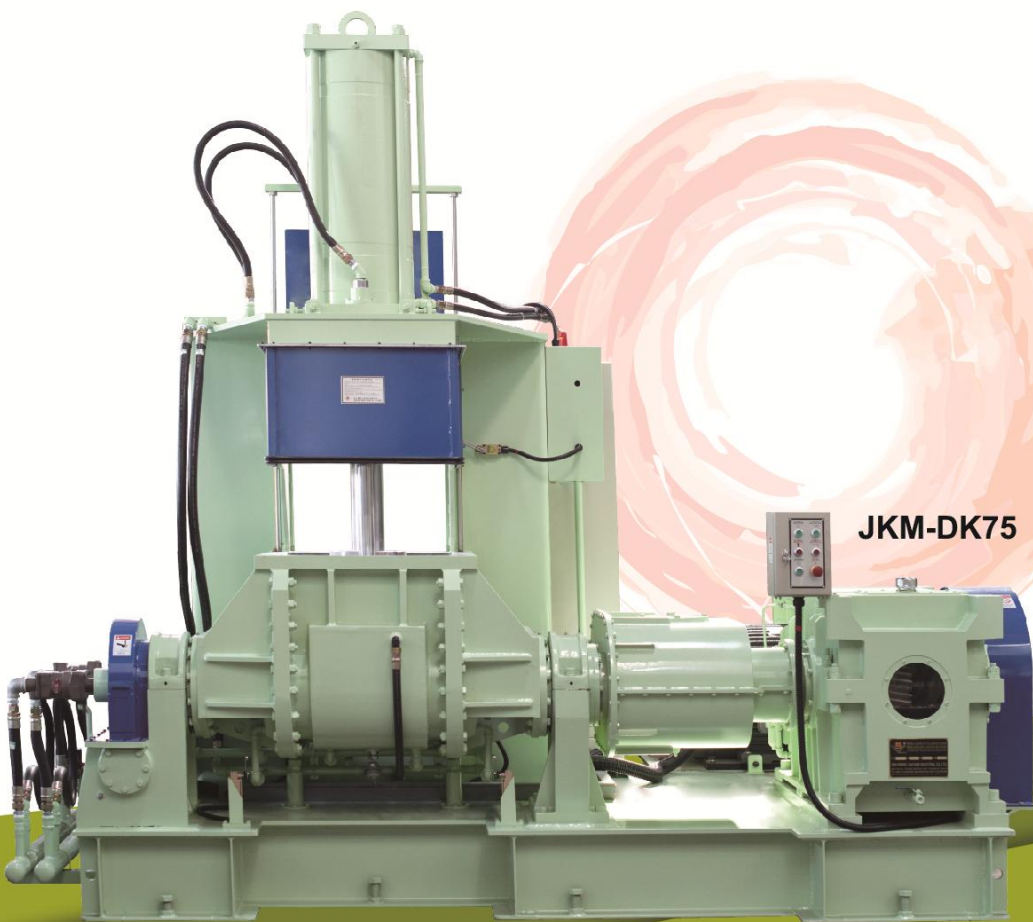
BUM-100L



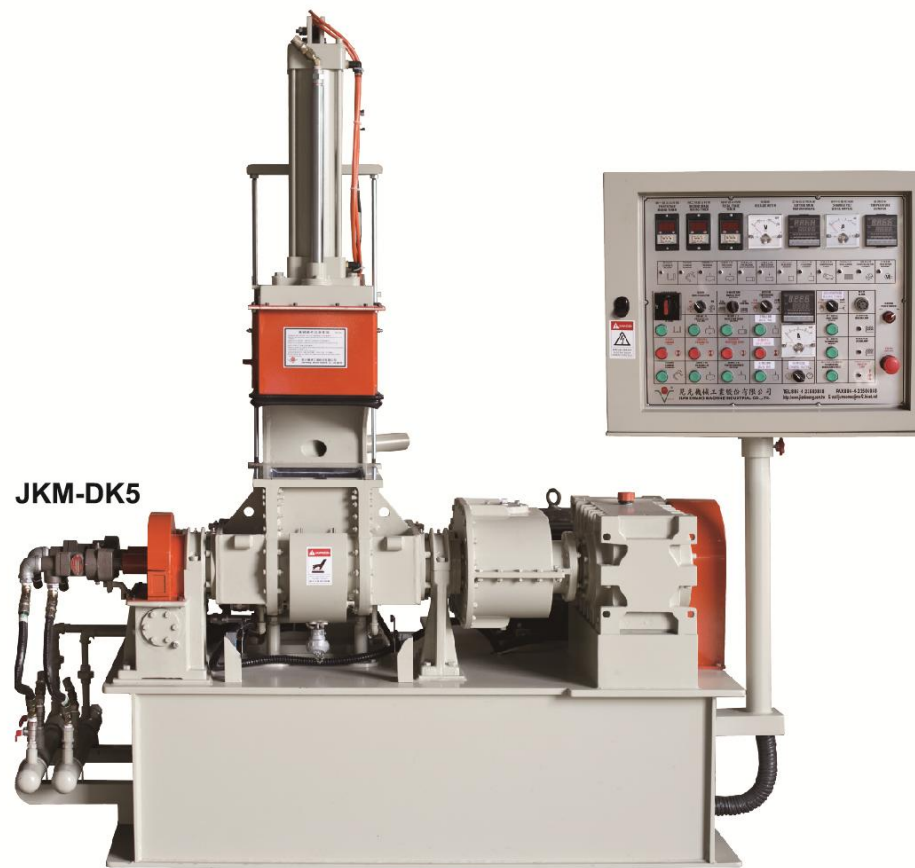
# 密煉式捏合機 Dispersion Kneader

## FEATURES:

- Suitable for various plastic materials, plastic foaming agents and pellet production.
- Mass production. Outstanding mixing performance assures the best dispersability and uniformity. Extremely stable processing.
- The compression type enclosed kneading and mixing machine provides an excellent quality of mix while avoiding environmental pollution.
- Temperature control system is auto steam heating and inlet cooling.
- Safe and easy to operate. High production efficiency.



JKM-DK75



JKM-DK5

## SPECIFICATION

TYPE	MIXING CAPACITY	MAIN POWER (HP)	TILTING POWER (HP)	CYLINDER DIAMETER (mm)	TILTING ANGLE	MATERIAL FEED TYPE	ROTOR SPEED FRONT/BACK (r.p.m)	MACHINE N.W. (kgs)	MACHINE DIMENSION (L x W x H) mm
JKM-DK3	3L	7 1/2	1/2	Ø 120	110	FRONT	39/30	1000	2100 x 1000 x 2100
JKM-DK5	5L	10	1/2	Ø 120	110	FRONT	39/30	1100	2300 x 1100 x 2000
JKM-DK10	10L	20	1	Ø 160	110	FRONT	39/30	2300	2200 x 1350 x 2250
JKM-DK20	20L	40	2	Ø 200	110	FRONT	39/30	4000	2500 x 1480 x 2600
JKM-DK35	35L	60	3	Ø 250	110	FRONT / BACK	39/30	6500	3000 x 1920 x 2840
JKM-DK55	55L	100	5	Ø 300	110	FRONT / BACK	39/30	8500	3400 x 2500 x 3250
JKM-DK75	75L	150	5	Ø 350	110	FRONT / BACK	39/30	10800	3850 x 2560 x 3320
JKM-DK110	110L	200	7 1/2	Ø 430	110	FRONT / BACK	39/30	14000	4100 x 3000 x 3750
JKM-DK150	150L	300	10	Ø 500	110	FRONT / BACK	39/30	21000	4300 x 3000 x 4700



# 滾輪機 Mixing Roller

## FEATURES:

- The mixing roller is designed for mixing and kneading plastic & rubber material to ensure outstanding dispersion of material.
- This model is installed on the mixing machine and provides automatic continuous operations, saving on labor's efforts.
- This model is excellent for increasing the processing area and lowering the material temperature, speeding the mix rate and improving quality.

**Conduit Heating is also available.**



**AUTOMATIC STOCK BLENDER (OPTIONAL)**



**JKM-18MR**



**JKM-22MR**

## SPECIFICATION

TYPE	SIZE OF ROLLS	POWER (HP)	MACHINE N.W. (kgs)	MACHINE DIMENSION (L x W x H) mm	LENGTH INCREASE AVAILABLE
JKM-10MR	10" x 26" L	20	2450	3100 x 1100 x 1700	10" x 30" L
JKM-12MR	12" x 30" L	30	4000	3230 x 1300 x 1700	12" x 36" L
JKM-14MR	14" x 36" L	40	5300	4100 x 1500 x 1900	14" x 42" L
JKM-16MR	16" x 42" L	60	8500	4500 x 1900 x 1750	16" x 48" L
JKM-18MR	18" x 48" L	75	11000	4800 x 2000 x 1950	18" x 54" L
JKM-22MR	22" x 60" L	125	17500	5000 x 2900 x 2000	22" x 60" L

## 實驗室密煉捏合機 Laboratory Kneader

### FEATURES:

- Suitable for various plastic materials, plastic foaming and pellet production.
- Outstanding mixing performance assures the best dispersability and uniformity. Extremely stable processing.
- The compression type enclosed kneading and mixing machine provides an excellent quality of mixture while avoiding environmental pollution. Temperature control system is auto steam heating and inlet cooling.
- Safe and easy to operate. High production efficiency.



**JKM-DK25G**

## 實驗室滾輪機 Laboratory Mixing Roller

### JKM-6MR



### FEATURES:

- The laboratory mixing roller is a practical testing equipment for rubber & plastic industries and designed for product R&D, improvement and color mixing tests.
- The mixing roller is designed for mixing and kneading plastic & rubber material to ensure outstanding dispersion of material.
- This model is excellent for increasing processing area and lowering the material temperature, speeding the mix rate and increasing quality.

### SPECIFICATION

TYPE	SIZE OF ROLLS	POWER (HP)	MACHINE N.W. (kgs)	MACHINE DIMENSION (L x W x H) mm
JKM-6MR	6" x 15" L	5	1100	1200 x 710 x 1320
JKM-8MR	8" x 20" L	5	1600	1500 x 900 x 1700

## 攪拌烘乾機 Mixing Drying Machine

### FEATURES:

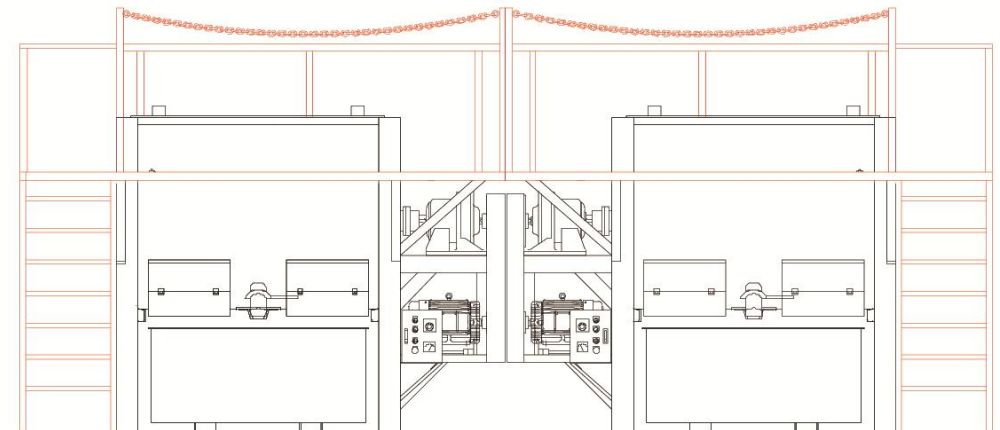
- Designed for mixing, drying and retaining temperature of plastics injection molding machine.
- Capable of pelletizing PVC powder, grains, PP, PE, and ABS. Also ideal for mass material mixing and drying.



**KDS-1000**

### SPECIFICATION

TYPE	POWER (HP)	MAX. CAPACITY (kgs)	MACHINE N.W. (kgs)	MACHINE DIMENSION (L x W x H) mm
KDS-50	1	50	350	1240 x 740 x 1075
KDS-100	2	100	400	1515 x 815 x 1405
KDS-200	2	200	500	1860 x 1000 x 1735
KDS-300	3	300	600	1915 x 1100 x 1835
KDS-400	5	400	850	2065 x 1130 x 1945
KDS-600	5	600	1350	2390 x 1175 x 2135
KDS-1000	15	1000	2200	2805 x 1315 x 2485
KDS-1500	20	1500	2700	3290 x 1365 x 2485
KDS-2000	25	2000	3200	3735 x 1430 x 2485
KDS-3000	30	3000	4500	4635 x 1665 x 2785





## 混合染色機 Mixer



**TKS-50**

### FEATURES:

- These models are suitable for color mixing of various plastic materials such as PP, PE, PU, PC, PVC, ABS, and TPR. They are also suitable for color verification and testing of chemical materials.
- These models are easy to operate, compact in design for space saving and convenient movement and they are easy to clean up.
- These models come with a direct motor drive and there is no need for displacement during operation. They have high mixing speed and mix the materials efficiently.

### SPECIFICATION

TYPE	POWER (HP)	MAX. CAPACITY (kgs)	MACHINE N.W. (kgs)	MACHINE DIMENSION (L x W x H) mm
TKS-25	1/2	25	70	530 x 530 x 1300
TKS-50	1/2	50	80	840 x 840 x 1530
TKS-100	1	100	100	1100 x 1100 x 1650

## 高速混合染色機 High Speed Mixer



**TKA-100**

### FEATURES:

- These models are easy to operate, compact in design for space saving and convenient movement.
- These models have eight special mixing blades to reach the best mixing quality. It's easy to change the color and clean up.

### SPECIFICATION

TYPE	POWER (HP)	MAX. CAPACITY (kgs)	MACHINE N.W. (kgs)	MACHINE DIMENSION (L x W x H) mm
TKA-50	5	50	200	680 x 900 x 1200
TKA-100	5	100	250	900 x 900 x 1200
TKA-150	7.5	150	300	900 x 900 x 1300

## 遞減式自動計量混合攪拌機 Gradual Reduction Automatic Metering Mixer

### FEATURES:

- The vertical mixing collection tank has a built in screw type feed tube for mixing and crushing materials conveniently.
- This mode permits individual setting of material out feed weight.
- This mode can be equipped with 4 mixers for various color mixing.



**KDS-400**

**JKM-2000VSM**

**KDS-400**

### SPECIFICATION

TYPE	POWER (HP)	CAPACITY (kgs)	VERTICAL DRUM		HOPPER TANK LENGTH (mm)	SCREW DIAMETER (mm)	MACHINE LENGTH (mm)
			DIAMETER (mm)	LENGTH (mm)			
JKM-1000 VSM	3	1000	1515	909	1364	228	3182
JKM-1500 VSM	3~5	1500	1554	1212	1364	228	3485
JKM-2000 VSM	7.5	2000	1818	1212	1364	254	3485
JKM-3000 VSM	10	3000	2121	1515	1364	254	3788

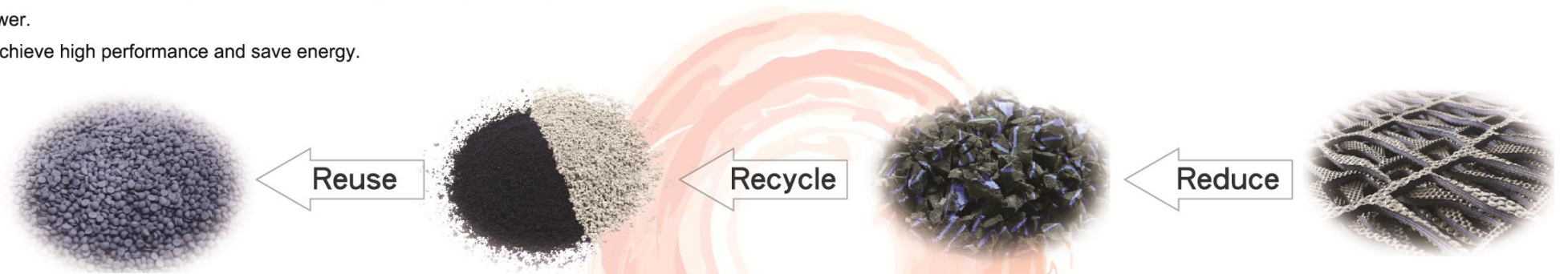
- The diameter of vertical drum excludes the width of angle bar & the round frame.

## EVA廢料回收整廠設備 15TH TAIWAN SMES INNOVATION AWARD!

### EVA Waste Recycling Process Equipment

#### FEATURES:

- The machine is designed for EVA foaming product and available for different EVA waste.
- Design focus on "3R": Reduce, Recycle and Reuse.
- Easy operation and changing of color saves the labor and time.
- The outcome of manufacturing plastic pellets has a great ability to save production time & manpower.
- It can achieve high performance and save energy.





# 子母式廢料回收整廠設備 Two Step Plastic Recycling Machine Equipment

**AVAILABLE MATERIAL: PP, PE, EPS, PS, ABS, NYLON**

**FEATURES:**

- Suitable for recycling clean waste materials such as PP, PE, PS, ABS...
- The pellet mixture is average, and the pellet size is uniform.
- The outcome of manufacturing plastic pellets has a great ability to save production time & manpower.
- Operation is simple with high efficiency.

MAIN EXTRUDER / TYPE	JKM-100R	JKM-120R	JKM-150R
MAIN SCREW DIAMETER	Ø 100 mm	Ø 120 mm	Ø 150 mm
SCREW LENGTH L/D	32 / 1	32 / 1	32 / 1
SCREW MATERIAL	SNCM 439	SNCM 439	SNCM 439
SCREW BARREL MATERIAL	SACM 645	SACM 645	SACM 645
POWER	60 HP	75 HP	100 HP
SPEED VARIATION	TWO SPEED	TWO SPEED	TWO SPEED
SCREEN CHANGER SYSTEM	HYDRAULIC	HYDRAULIC	HYDRAULIC
AUTO THERMO CONTROLLER	8 ZONES	8 ZONES	10 ZONES
PRODUCTIVITY (kg/hr.)	120 ~ 180	150 ~ 250	200 ~ 350
FORCE FEED POWER	3 HP	5 HP	5 HP
MACHINE DIMENSION (LxWxH)mm	5000 x 2100 x 2600	5400 x 2100 x 2600	6000 x 2200 x 3200
MACHINE NET WEIGHT (kgs)	4600	5000	5600
SUB EXTRUDER / TYPE	JKM-125RS	JKM-135RS	JKM-165RS
MAIN SCREW DIAMETER	Ø 125 mm	Ø 135 mm	Ø 165 mm
SCREW LENGTH L / D	10 / 1	10 / 1	10 / 1
SCREW MATERIAL	SNCM 439	SNCM 439	SNCM 439
SCREW BARREL MATERIAL	SACM 645	SACM 645	SACM 645
POWER	20 HP INVERTER	25 HP INVERTER	30 HP INVERTER
SPEED VARIATION	VARIABLE	VARIABLE	VARIABLE
SCREEN CHANGER SYSTEM	HYDRAULIC	HYDRAULIC	HYDRAULIC
AUTO THERMO CONTROLLER	4 ZONES	4 ZONES	5 ZONES
MACHINE DIMENSION (LxWxH)mm	2200 x 1600 x 1600	2200 x 1600 x 1600	2700 x 1750 x 1700
WATER TROUGH / MATERIAL	# 304 STAINLESS STEEL		
WHOLE PLANT DIMENSION (LxWxH)mm	15000 x 2500 x 3300	16000 x 2600 x 3300	18000 x 2700 x 3650
DRYER MOTOR	1 HP	1 HP	1 HP
PELLET CUTTER MOTOR	5 HP	7.5 HP	10 HP
AIR BLOWER MOTOR	3 HP	3 HP	5 HP
STORAGE CAPACITY (kgs)	600	600	1000



**JKM-150R** (This type is designed for film recycle)  
Two Step Plastic Recycling Machine Equipment

## 水洗式強力粉碎機 & 清洗設備

# Water Type Powerful Crusher & Washing System

### FEATURES:

- Designed for crushing various plastics, PP, PE, PVC, 475, ABS, PC, PU, acrylic, film resin, nylon, medicines, wood, feeds, tea, tea stems, leather, glass, flavoring, lead & copper wires, drying agents, etc.
- These crushers are suitable for plastic waste recycle of injection molding processors.
- These crushers integrate many features such as compact construction, easy movement, low noise, and low likelihood of powdering after crushing.
- A specially designed crusher offer extremely powerful crushing capacity and save time & effort and also are wear and impact resistant.
- The bearing is separated. The circular hollow cutter head has a special angle design for great crushing capacity. Easy feeding material, convenient knife replacement, easy screen change and clean up.
- These crushers increase your productivity and working efficiency.



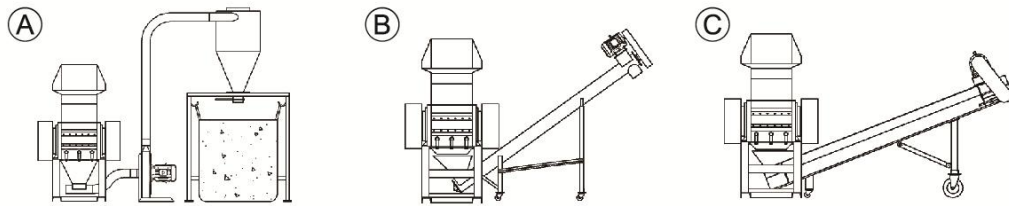
**JKM-940**  
Water Type Powerful Crusher & Washing System



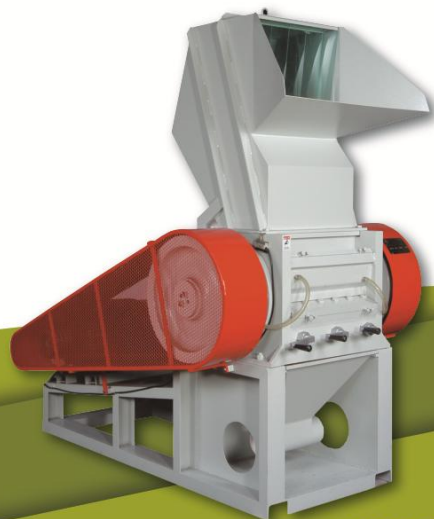
# 強力粉碎機 Powerful Crusher

## FEATURES:

- Designed for crushing various plastics, PP, PE, PC, PU, PVC, ABS, 475, rubber, fibers, acrylic, film resin, nylon, medicines, wood, feeds, tea, tea stems, leather, glass, flavoring, lead & copper wires, drying agents, etc.
- These crushers are suitable for plastic waste recycle of injection moulding processors.
- These crushers integrate many features such as compact construction, easy movement, low noise, and low likelihood of powdering after crushing.
- A specially designed crusher offers an extremely powerful crushing capacity, and saves time & effort, and is also wear and impact resistant.
- The circular hollow cutter head has a special angle design for the greater crushing capacity, easy feeding material, convenient knife replacement, easy screen change and easy to clean.
- These crushers increase your productivity and work efficiency.



JKM-950



JKM-920



JKM-712



JKM-700A

## SPECIFICATION

TYPE	POWER (HP)	ENTRANCE DIMENSION (mm)	ROTARY CUTTER (pcs)	STATIONARY CUTTER (pcs)	CAPACITY (kg/hr.)	MACHINE N.W. (kgs)	MACHINE DIMENSION (L x W x H)mm
JKM-700A	5	300 x 200	3	2	50~150	150	980 x 580 x 1250
JKM-712	7 1/2~10	330 x 270	3 or 6	2	120~230	530	1350 x 715 x 1280
JKM-715	10~20	405 x 300	3 or 6	2	150~370	660	1450 x 870 x 1565
JKM-720	15~25	525 x 300	3 or 6	2	300~600	950	1450 x 997 x 1565
JKM-720A	20~30	530 x 370	3 or 6	2	400~800	1200	1780 x 1100 x 1960
JKM-725A	20~40	655 x 380	3 or 6	2	500~1000	1350	1780 x 1225 x 1960
JKM-730A	30	784 x 380	3 or 9	2	600~1200	1500	1780 x 1350 x 1960
JKM-915	15~30	400 x 300	3 or 6	4	400~700	1100	1800 x 910 x 1650
JKM-920	20~75	530 x 300	3 or 6	4	600~1000	1150	2100 x 1240 x 2010
JKM-925	25~75	657 x 300	3 or 6	4	800~1200	1250	2100 x 1370 x 2010
JKM-930	40~75	784 x 300	9	4	1000~1500	2400	2100 x 1495 x 2010
JKM-940-300	50~100	1036 x 300	12	4	1200~1800	2900	2100 x 1750 x 2010
JKM-940-480	50~100	1036 x 480	12	4	1200~1800	3100	2500 x 1800 x 2150
JKM-950-480	50~100	1290 x 480	15	4	1400~2000	5000	2500 x 2055 x 2150
JKM-950-1000	50~100	1290 x 1000	15	4	2000~3500	7000	3300 x 2350 x 3800

- Custom specifications are available.

## 強力破碎機 Powerful Shredder

### FEATURES:

- Designed for shredding a wide variety of materials rubber, plastic materials, acrylic, resin, nylon, wood and leather, etc.
- Specially designed claw type cutters provide extra powerful crushing, maximum wear resistance, time saving and impact saving.
- The angle material infeed. Easy-to-remove screen for added convenience of cleaning.
- A separated structure allows filter screens in material hopper and crushing chamber to be easily dismantled, providing convenient cleaning and maintenance.



**JKM-1000S**

### SPECIFICATION

TYPE	POWER (HP)	CYCLO	ENTRANCE DIMENSION (mm)	CUTTER NUMBER (pcs)
<b>JKM-610S</b>	50 HP x 1	#90 x 1	610 x 450	19 x T32 mm
<b>JKM-805S</b>	60 HP x 1	#90 x 1	805 x 900	16 x T50 mm
<b>JKM-1000S</b>	75 HP x 2	#92 x 2	1000 x 900	20 x T50 mm
<b>JKM-1200S</b>	75 HP x 2	#92 x 2	1200 x 900	24 x T50 mm
<b>JKM-1500S</b>	75 HP x 2	#92 x 2	1500 x 900	30 x T50 mm

## 重切削用磨刀機 Automatic Knife Grinder

### FEATURES:

- It is suitable for grinding various cutters and knives with rigid machine body.
- The table can be steadily moved backward / forward by an electro-magnetic control device. It comes with a specially design cooling system.
- The cooling can be adjusted to prevent knives from being overheated and annealed.
- The sliding parts are well lubricated with one shot lubricating system.

### SPECIFICATION

TYPE	JKG-610	JKG-900
GRINDING CAPACITY(L x W x T) mm	660 x 126 x 16	914 x 127 x 18
GRINDING WHEEL SIZE(OD x ID x H) mm	Ø150 x 90 x 90	Ø150 x 90 x 90
GRINDING WHEEL SPEED	3400 R.P.M.	3400 R.P.M.
GRINDING WHEEL MOTOR	2 HP	2 HP
AUTOMATIC TRAVERSE MOTOR	1/4 HP	1/4 HP
COOLANT PUMP MOTOR	1/8 HP	1/8 HP
MACHINE NET WEIGHT	290 KGS	340 KGS
MACHINE DIMENSION (L x W x H) mm	1150 x 750 x 1350	1570 x 940 x 1610



**TKG-610**

## 連續式烘乾機 Continuous Drying System

### FEATURES:

- Designed for drying various plastic materials and films.
- The drying system employs an electric heater.
- Easy to operate, maintain and clean.



**JKM-750CD**

### SPECIFICATION

TYPE	JKM-750CD
SCREW MATERIAL	COMMON IRON
POWER	7.5 HP
DRYING SYSTEM	ELECTRIC HEATER
AIR BLOWER / POWER	1/6 HP x 6 UNITS
MACHINE N.W.	1500 KGS
MACHINE DIMENSION (L x W x H) mm	7020 x 1275 x 3220